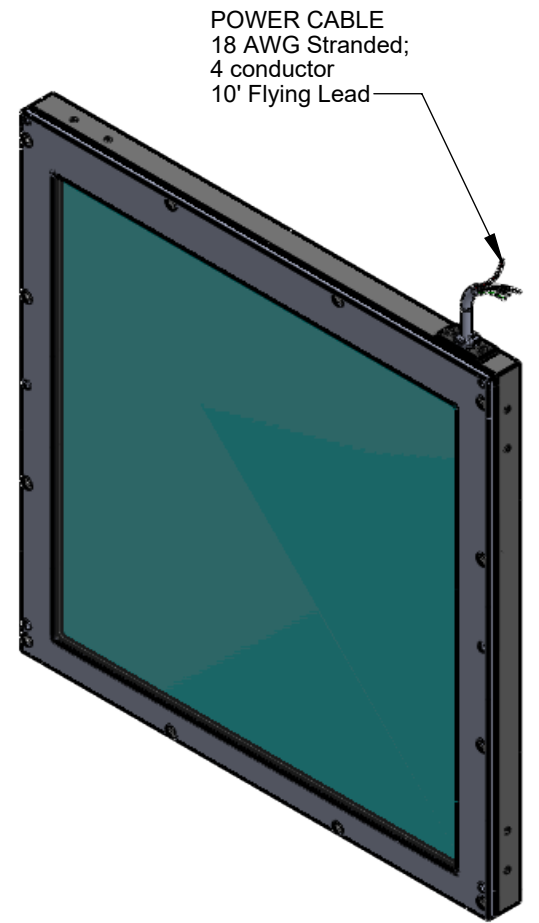
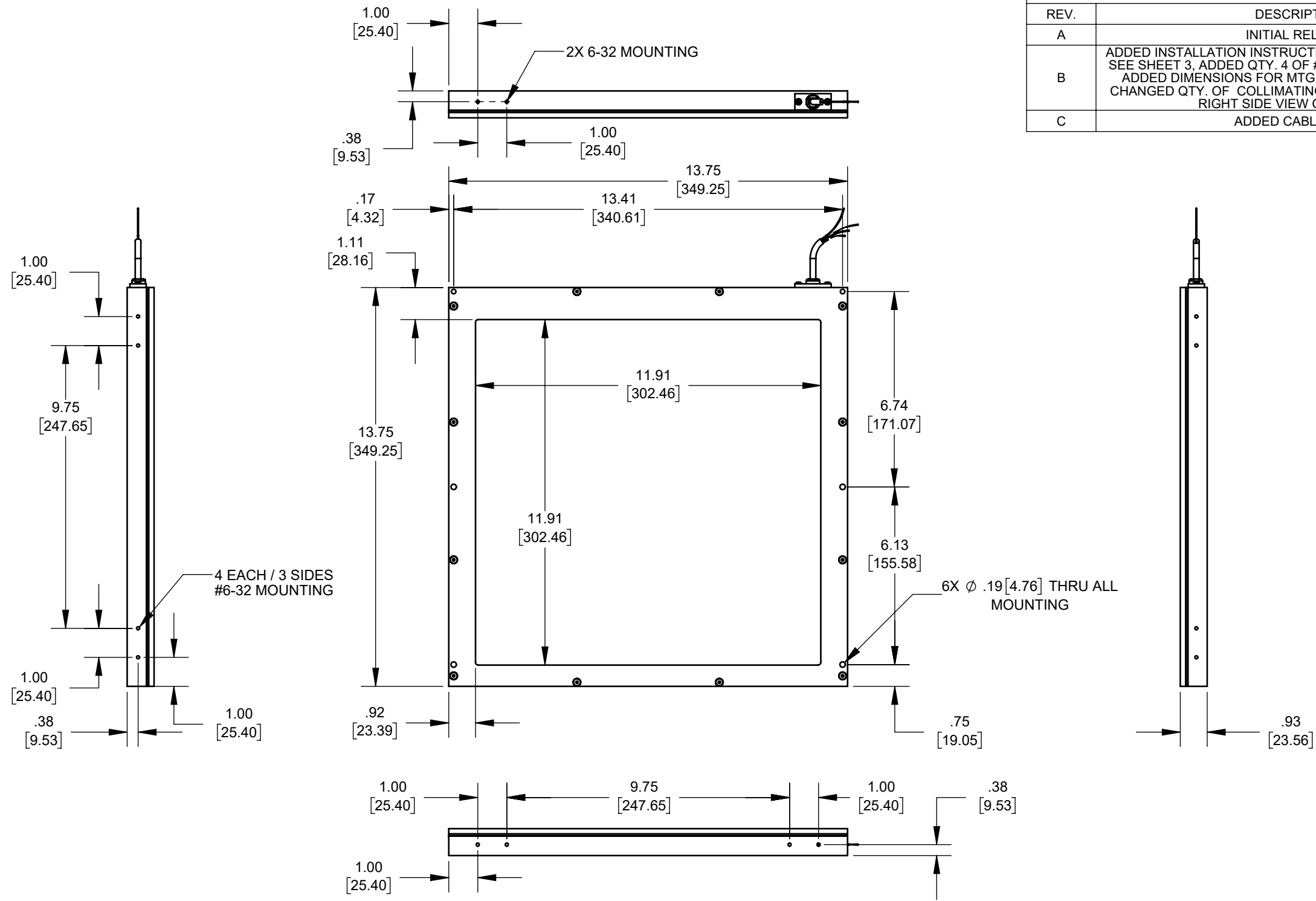


REVISIONS			
REV.	DESCRIPTION	DATE	APPROVED
A	INITIAL RELEASE	8/4/2016	
B	ADDED INSTALLATION INSTRUCTION FOR COLLIMATING FILM SEE SHEET 3, ADDED QTY. 4 OF #2-56 X 1/8LG SET SCREWS, ADDED DIMENSIONS FOR MTG. HOLES AND LENS AREA, CHANGED QTY. OF COLLIMATING FILM TO 2 AND CHANGED RIGHT SIDE VIEW ORIENTATION	12/5/2016	
C	ADDED CABLE SPEC	1/11/2018	



SEE SHEET 2 FOR EXPLODED VIEW AND BOM.

Metaphase Technologies, Inc. 211 Sinclair Road, Suite 100, Bristol, PA. 19007 215-639-8699 Fax 215-639-0977



<b>QUANTITY:</b>	Per order
<b>MATERIAL:</b>	Per BOM
<b>FINISH:</b>	Black Anodized
<b>TREATMENT:</b>	N/A

TOLERANCE/FINISH UNLESS OTHERWISE SPECIFIED				
INCHES [MM]				
X	.X	.XX	.XXX	125√RMS [RA3.2um]
[±.76]	±.030 [±.25]	±.010 [±.13]	±.005	ANGLES ±1°

THIS DOCUMENT IS THE PROPERTY OF METAPHASE TECHNOLOGIES, INC. WHOM MAY LOAN IT, SUBJECT TO RETURN UPON DEMAND. IT INCLUDES CONFIDENTIAL & PROPRIETARY INFORMATION WHICH MAY NOT BE DISCLOSED TO ANY THIRD PARTY, AND/ OR USED FOR ANY PURPOSE CONTRARY TO IT'S INTENDED USE, WITHOUT THE EXPRESSED PRIOR WRITTEN CONSENT OF METAPHASE TECHNOLOGIES, INC.

TITLE		
Assy., 12" x 12" Backlight		
USED ON		
Per customer		
SIZE	DRAWING NUMBER	REV
B	BL12x12-CL-1	C
SCALE 1:4		SHEET 1 OF 1

Approval Signature \_\_\_\_\_ Date \_\_\_\_/\_\_\_\_/\_\_\_\_