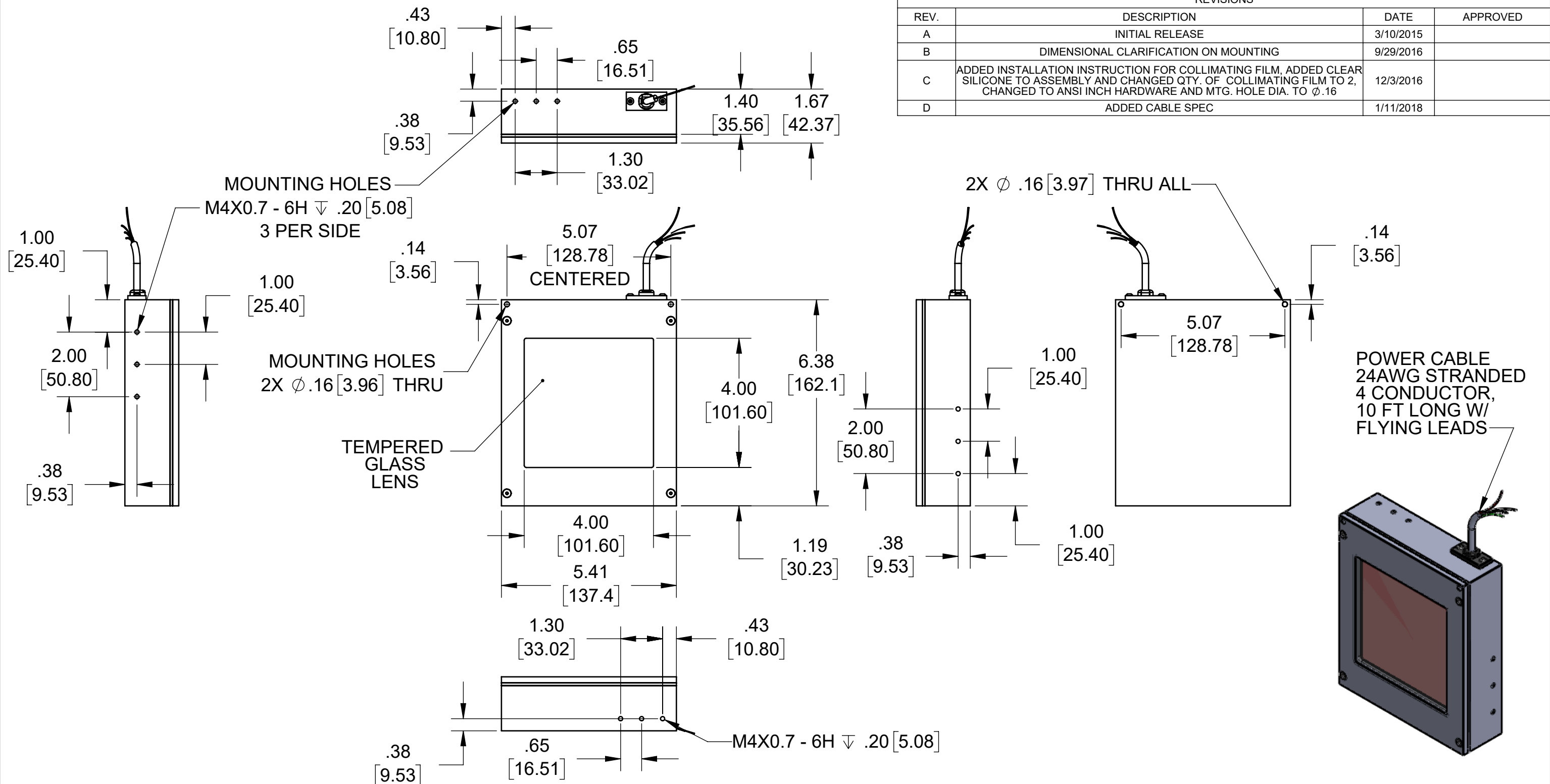


REVISIONS			
REV.	DESCRIPTION	DATE	APPROVED
A	INITIAL RELEASE	3/10/2015	
B	DIMENSIONAL CLARIFICATION ON MOUNTING	9/29/2016	
C	ADDED INSTALLATION INSTRUCTION FOR COLLIMATING FILM, ADDED CLEAR SILICONE TO ASSEMBLY AND CHANGED QTY. OF COLLIMATING FILM TO 2, CHANGED TO ANSI INCH HARDWARE AND MTG. HOLE DIA. TO ϕ .16	12/3/2016	
D	ADDED CABLE SPEC	1/11/2018	



Metaphase Technologies, Inc. 211 Sinclair Road, Suite 100, Bristol, PA. 19007 215-639-8699 Fax 215-639-0977			
QUANTITY: Per order	TOLERANCE/FINISH UNLESS OTHERWISE SPECIFIED	THIS DOCUMENT IS THE PROPERTY OF METAPHASE TECHNOLOGIES, INC. WHOM MAY LOAN IT, SUBJECT TO RETURN UPON DEMAND. IT INCLUDES CONFIDENTIAL & PROPRIETARY INFORMATION WHICH MAY NOT BE DISCLOSED TO ANY THIRD PARTY, AND/ OR USED FOR ANY PURPOSE CONTRARY TO IT'S INTENDED USE, WITHOUT THE EXPRESSED PRIOR WRITTEN CONSENT OF METAPHASE TECHNOLOGIES, INC.	
MATERIAL: Per BOM	INCHES [MM]	TITLE: Back Light 4"[101] x 4"[101]	
FINISH: Black Anodize	X .X .XX .XXX	USED ON: Per customer	
TREATMENT: N/A	±.76 ±.030 [±.25] ±.010 [±.13] ±.005	SCALE 1:3	
Approval Signature	125√RMS [RA3.2um]	DRAWING NUMBER: BL4X4-CL-1	
/ / Date	ANGLES ±1°	REV: D	
		SHEET 1 OF 1	