

REVISIONS			
REV.	DESCRIPTION	DATE	APPROVED

POWER CABLE
18 AWG, (4) CONDUCTOR
WITH FLYING LEADWIRE ENDS.
10 FT LG.

65.23 OVERALL LENGTH
[1656.9]

63.25 LENS
[1606.6]

2.22
[56.46]

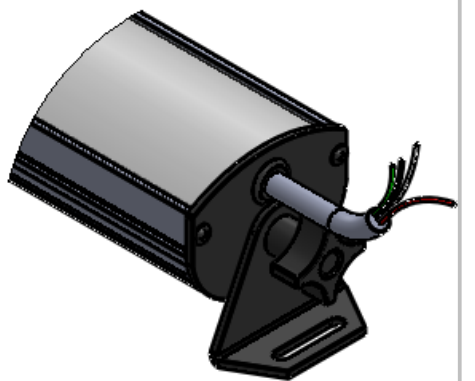
2.26
[57.4]

KNOBS FOR
ADJUSTING
LIGHT ANGLE

MOUNTING BRACKETS
USE #10 OR M6 HARDWARE
TO MOUNT LIGHT

64.60
[1640.88]
MOUNTING HOLE SLOTS

.81
[20.46]
MOUNTING
SLOT



Metaphase Technologies, Inc. 211 Sinclair Road, Suite 100, Bristol, PA. 19007 215-639-8699 Fax 215-639-0977

QUANTITY: Per order
MATERIAL: Per BOM
FINISH: Black Anodize
TREATMENT: N/A

TOLERANCE/FINISH UNLESS OTHERWISE SPECIFIED				
INCHES[MM]				125√RMS [RA3.2um]
X	.X	.XX	.XXX	ANGLES±1°
[±.76]	±.030 [+.25]	±.010 [+.13]	±.005	

THIS DOCUMENT IS THE PROPERTY OF
METAPHASE TECHNOLOGIES, INC. WHOM MAY
LOAN IT, SUBJECT TO RETURN UPON DEMAND.
IT INCLUDES CONFIDENTIAL & PROPRIETARY
INFORMATION WHICH MAY NOT BE DISCLOSED
TO ANY THIRD PARTY, AND/ OR USED FOR
ANY PURPOSE CONTRARY TO IT'S INTENDED
USE, WITHOUT THE EXPRESSED PRIOR WRITTEN
CONSENT OF **METAPHASE TECHNOLOGIES, INC.**

Metaphase Lighting for Machine Tools & Specialty Markets

TITLE: **ISO Light- 63" Long**

USED ON: **Per Customer**

SIZE: **B** DRAWING NUMBER: **ISO-63-1** REV: **A**

SCALE: 1:3 SHEET 1 OF 2

Approval Signature _____

/ /
Date