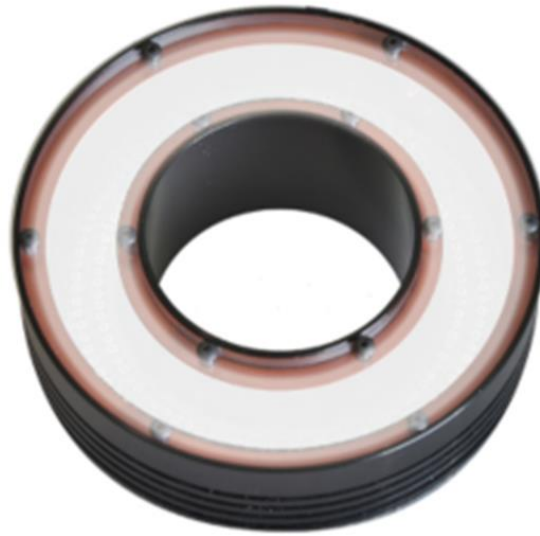


MB-RL205

The Metaphase Washdown Ring Light offers high intensity, shadow-less illumination with five times the lifetime over fluorescents. Ring lights are essential for lighting specular or diffused surfaces. The MetaBright™ Washdown Ring Light is built with high density LEDs that create bright illumination of surfaces for a wide spectrum of inspection purposes.

The Washdown Ring Light allows the use of one of the most popular lighting systems in a larger variety of environments and can be used where they may be exposed to water, moisture, and debris. With this watertight gasket design, high-pressure jets and washdowns are not a problem; great for food, drug, or outdoor applications. Three ¼-20 tapped holes provide the ability to mount the ring light directly on the camera. This light is available in both aluminum and stainless-steel housings.



FEATURES

- Homogenous light output that provides high intensity ON-axis illumination
- IP67 rated, rugged design with thermally potted LEDs
- LED thermal management for stable performance
- Ideal for solder joint and electronic component inspection
- Flicker free performance and instant start up with Metaphase analog driver technology
- An ideal light with many applications including, label Identification, part markings, surface inspection etc.
- Built-in Constant Current Driver with 0 – 10VDC intensity control, compatible with DDC-3 and ILD-35-24-L

WAVELENGTHS

Order ID	Description / nanometers
W	White (6000K), Nominal
R	Red / 630nm
G	Green / 530nm
B	Blue / 470nm
IR850 (or IRN)	Infrared / 850nm
IR880 (or IRL)	Infrared / 880nm
IR940	Infrared / 940nm
UV395 (or UVL)	Ultraviolet Long / 395nm

GENERAL SPECIFICATIONS

Power Source:	24VDC ±5%
Cable (Standard):	10-foot cable with flying leads
Housing:	Black Anodized Aluminum
Ambient Temp:	-20°C to 40°C
Lifetime Expectancy:	75,000 hours (except UV)

MB-RL205

Washdown RING LIGHT							
MODEL*	Outside Diameter Inches (cm)	Inside Diameter Inches (cm)	Weight lbs (grams)	Cable QTY	Cable Length	Cable Description	Maximum Input Current @24VDC
MB-RL205-IP67	5.15 (13.09)	2.00 (5.09)	.84 (380)	1	10ft	24 AWG 4 Wire	.75A
MB-RL205-67SS	5.15 (13.09)	2.00 (5.09)	~2.0 (900)				.75A

*Custom sizes and configurations available upon request

Wiring (4 conductors, flying leads)**	
Wire Color	Function
RED	+24VDC
WHITE	0-10VDC INTENSITY CONTROL
BLACK	GROUND (24V RTN)
GREEN	SIGNAL GROUND

Wiring (4 conductors, without Intensity Control)	
Wire Color	Function
RED	+24VDC
WHITE	+24VDC
BLACK	GROUND (24V RTN)
GREEN	GROUND (24V RTN)

M12 (5 position male)**	
Pin #	Function
1	+24VDC
2	0-10VDC Intensity Control
3	GROUND (24V RTN)
4	SIGNAL GROUND
5	No Connection
The M12 connector option is not recommended for lights rated more than 4 amps	

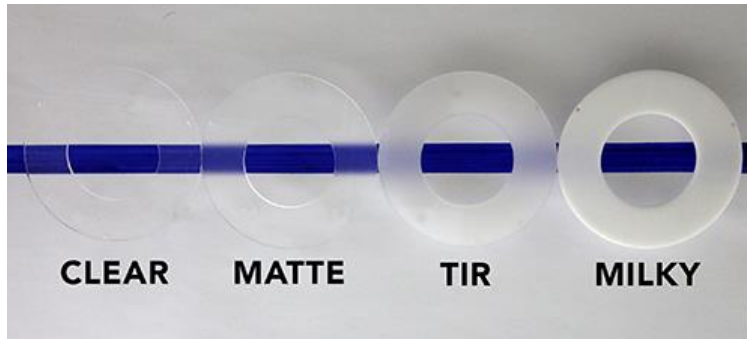
Wiring with ULC-2	
Wire Color	Function
RED, WHITE (+)	LED INPUT
BLACK, GREEN (-)	
Terminated within a 2 position ULC-2 output connector (Phoenix Contact P/N: BCP-508-2)	

**Note: The 0-10VDC Intensity Control input can accept voltages from 0-24VDC where the light will operate at full intensity in the 10-24VDC range. The light is proportionally dimmer for any Intensity Control voltage less than 10VDC and the light is OFF at approximately 0V or not connected (floating).

MB-RL205

MODEL NUMBER KEY								
MODEL	-	WAVELENGTH	-	VOLTAGE	-	LENS	-	OPTION
MB-RLXXX	-	XXX	-	XXX	-	XX	-	X-XXX
MB-RL205-IP67 MB-RL205-67SS	-	W (White 6000K, Nominal) R (Red 630nm) G (Green 530nm) B (Blue 470nm) IR850 (or IRN) (Infrared 850nm) IR880 (or IRL) (Infrared 880nm) IR940 (Infrared 940nm) UV395 (or UVL) (UV Long 395nm)	-	24 (+24VDC, standard) U (ULC-2 interface) KEY (Keyence Controller) ILD (In Line Dimmer) ILS (In Line Strobe)	-	CC (Clear Cover) D2 (Matte) D3 (TIR) D4 (Milky White)	-	T (M12 Connector) XXX (Custom code)

Lens/Diffuser Options



Contact Metaphase Technologies or your local representative for options such as custom diffusers, lenses, polarizers, IP-rated enclosures for harsh environments, higher intensity, custom wavelengths, higher uniformity, etc. Not all options are available for all lights.

MB-RL205

Wiring (4 conductors, flying leads)**	
Wire Color	Function
RED	+24VDC
WHITE	0-10VDC INTENSITY CONTROL
BLACK	GROUND (24V RTN)
GREEN	SIGNAL GROUND

Wiring (4 conductors, without Intensity Control)	
Wire Color	Function
RED	+24VDC
WHITE	+24VDC
BLACK	GROUND (24V RTN)
GREEN	GROUND (24V RTN)

M12 (5 position male)**	
Pin #	Function
1	+24VDC
2	0-10VDC Intensity Control
3	GROUND (24V RTN)
4	SIGNAL GROUND
5	No Connection
The M12 connector option is not recommended for lights rated more than 4 amps	

Wiring with ULC-2	
Wire Color	Function
RED, WHITE (+)	LED INPUT
BLACK, GREEN (-)	
Terminated within a 2 position ULC-2 output connector (Phoenix Contact P/N: BCP-508-2)	

**Note: The 0-10VDC Intensity Control input can accept voltages from 0-24VDC where the light will operate at full intensity in the 10-24VDC range. The light is proportionally dimmer for any Intensity Control voltage less than 10VDC and the light is OFF at approximately 0V or not connected (floating).

MetaBright™ Washdown Ring Light

PRODUCT
DATA SHEET



MB-RL205

Sample Model Number: **MB-RL205-IP67-W-24-CC-Z**

REVISIONS			
REV.	DESCRIPTION	DATE	APPROVED
A	INITIAL RELEASE	10/19/2017	

Metaphase Technologies, Inc. 211 Sinclair Road, Suite 100, Bristol, PA. 19007 215-639-8699 Fax 215-639-0977			TITLE Top Assy.; 3" Ring Light
QUANTITY: Per order	MATERIAL: ALUM		
SEE SHEET 2 FOR EXPLODED VIEW AND BOM.	FINISH: BLK ANODIZE	THIS DOCUMENT IS THE PROPERTY OF METAPHASE TECHNOLOGIES, INC. WHOM MAY LOAN IT. SUBJECT TO RETURN UPON DEMAND. IT INCLUDES CONFIDENTIAL & PROPRIETARY INFORMATION WHICH MAY NOT BE DISCLOSED TO ANY THIRD PARTY, AND OR USED FOR ANY PURPOSE CONTRARY TO ITS INTENDED USE, WITHOUT THE EXPRESSED PRIOR WRITTEN CONSENT OF METAPHASE TECHNOLOGIES, INC.	
Approval Signature _____	Date / / _____		

COMPLIANCE



IP67

CONTACT US

Contact Metaphase Technologies at **215-639-8699** or your local representative for additional details, options and customizations.