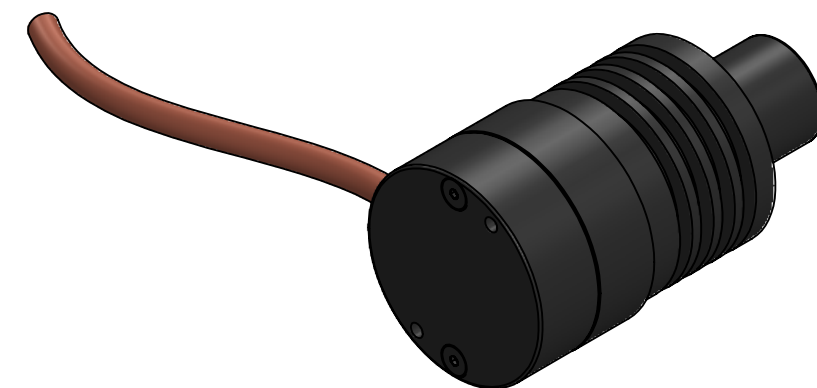
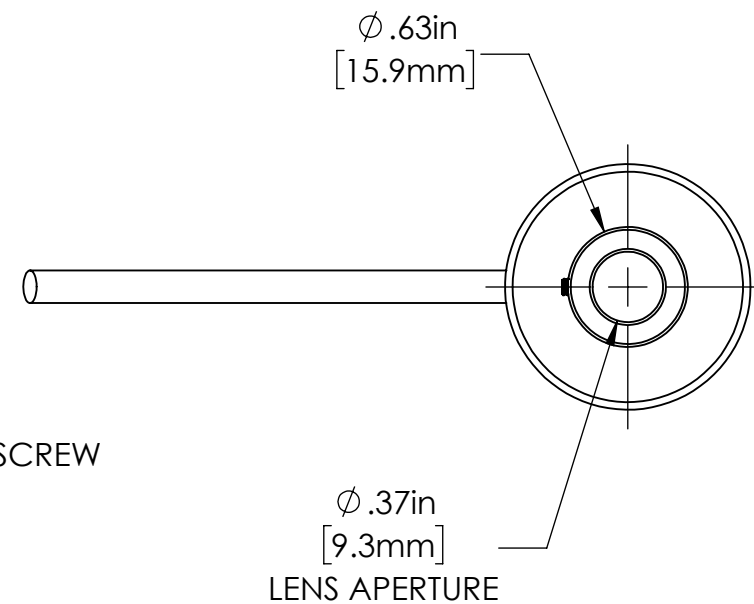
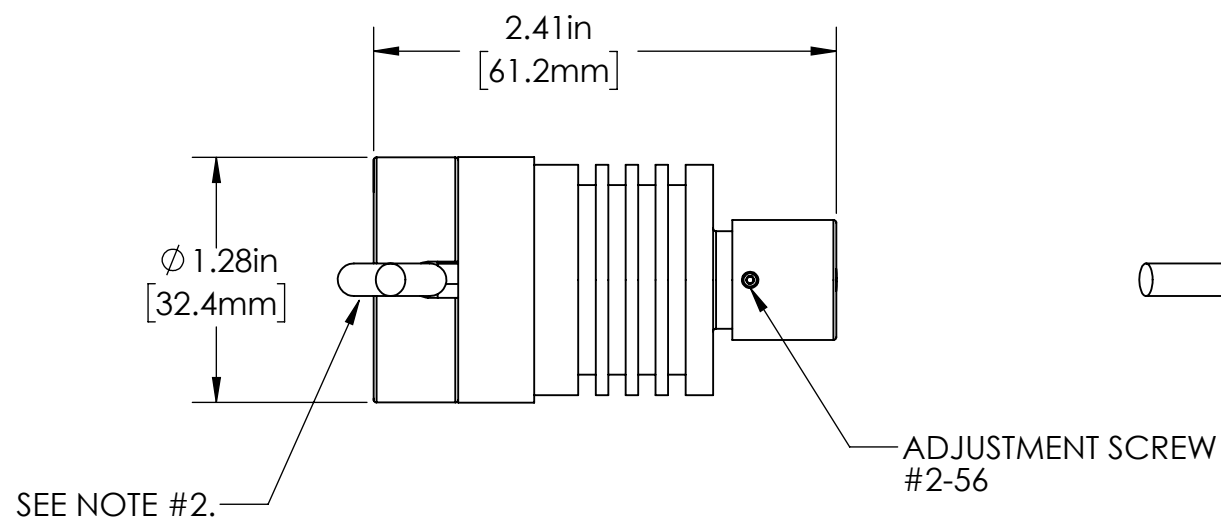
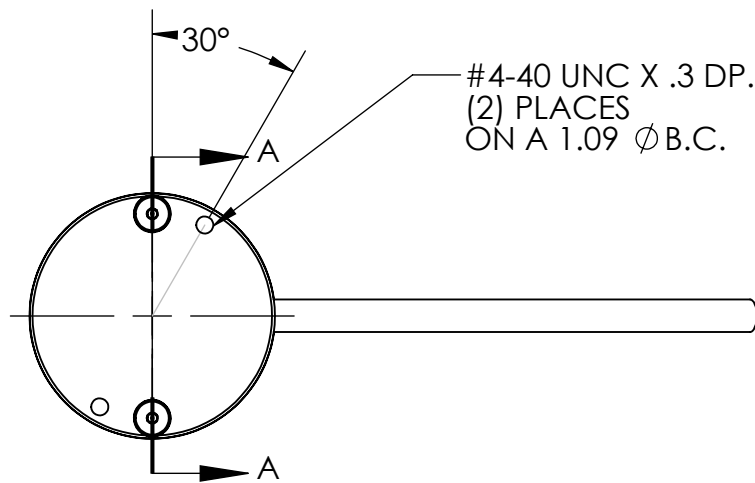


| REVISIONS |      |  |            |          |
|-----------|------|--|------------|----------|
| ZONE      | REV. | DESCRIPTION                                  | DATE       | APPROVED |
|           | A    | REVISED AND REDRAWN, KW                      | 2/11/2011  |          |
|           | B    | REVISED DRAWING, KW                          | 5/17/2012  |          |
|           | c    | Revised and Reformatted, Created Sub Details | 7/18/2016  |          |
|           | D    | ADDED MISSING PARTS / UPDATE TO AS BUILT     | 12/14/2016 |          |
|           | E    | ADDED SHEET FOR OPTIONAL BRACKET             | 8/21/2017  |          |



NOTES: UNLESS OTHERWISE SPECIFIED

1. FINISH: BLACK ANODIZED HOUSING.
2. 10 FT CABLE PROVIDED.
3. OPTIONAL HOLDING BRACKET- AB3-30.

Metaphase Technologies, Inc. 211 Sinclair Road, Suite 100, Bristol, PA. 19007 215-639-8699 Fax 215-639-0977



**QUANTITY:** Per order

**MATERIAL:** Per BOM

**FINISH:** Black Anodize

**TREATMENT:** N/A

TOLERANCE/FINISH UNLESS OTHERWISE SPECIFIED

| INCHES [MM] |              |              |       | 125√RMS [RA3.2um] |
|-------------|--------------|--------------|-------|-------------------|
| X           | .X           | .XX          | .XXX  | ANGLES ±1°        |
| [±.76]      | ±.030 [±.25] | ±.010 [±.13] | ±.005 |                   |

THIS DOCUMENT IS THE PROPERTY OF METAPHASE TECHNOLOGIES, INC. WHOM MAY LOAN IT, SUBJECT TO RETURN UPON DEMAND. IT INCLUDES CONFIDENTIAL & PROPRIETARY INFORMATION WHICH MAY NOT BE DISCLOSED TO ANY THIRD PARTY, AND/ OR USED FOR ANY PURPOSE CONTRARY TO IT'S INTENDED USE, WITHOUT THE EXPRESSED PRIOR WRITTEN CONSENT OF METAPHASE TECHNOLOGIES, INC.

TITLE  
**SPOTLIGHT 0.6" ADJ FOCUS**

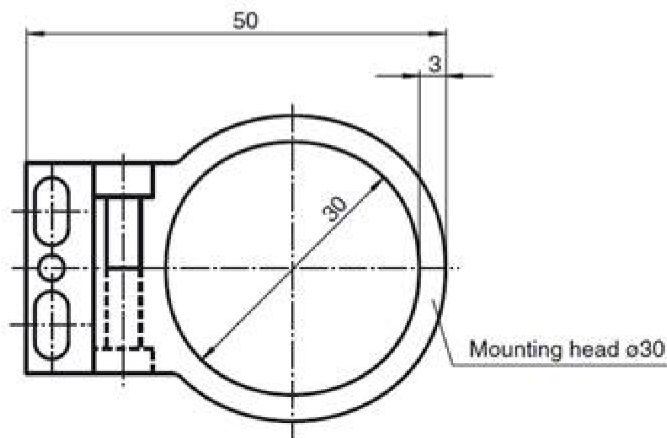
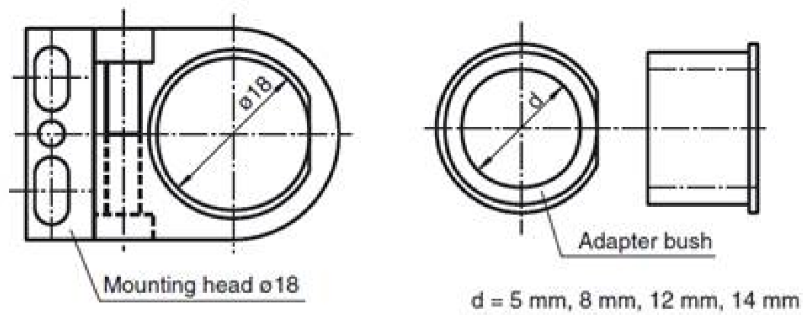
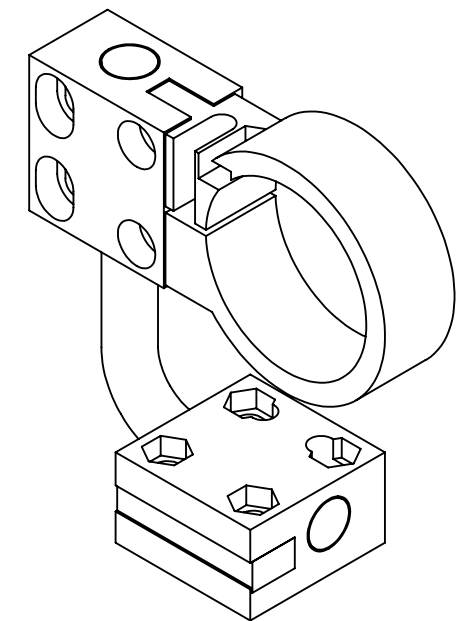
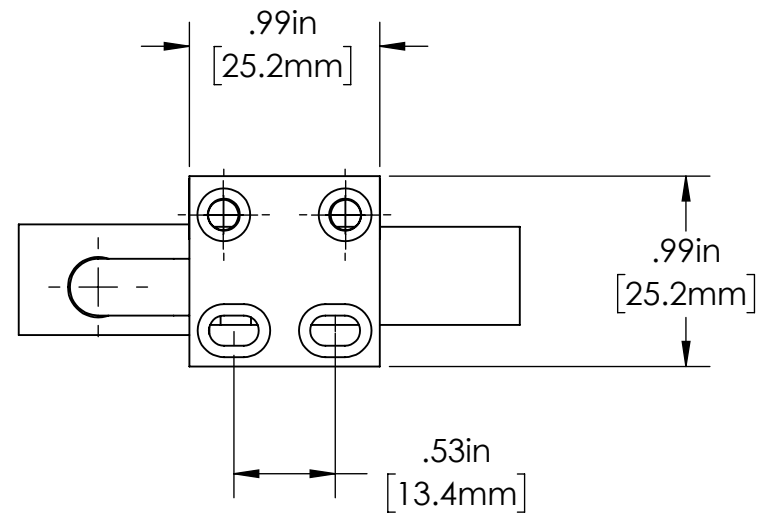
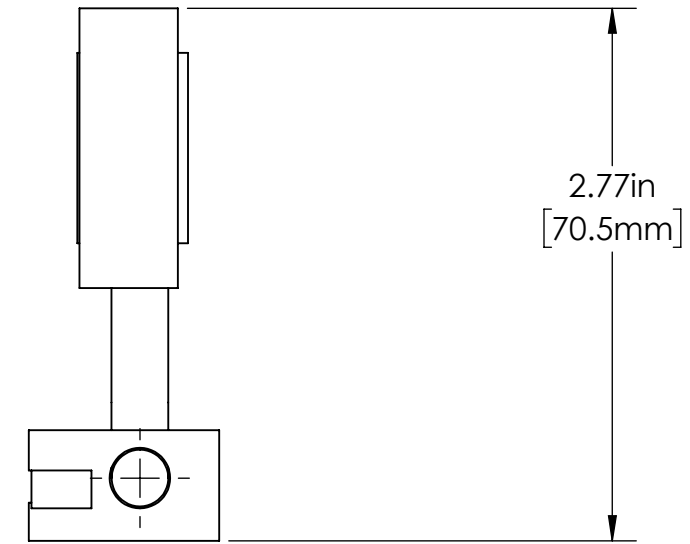
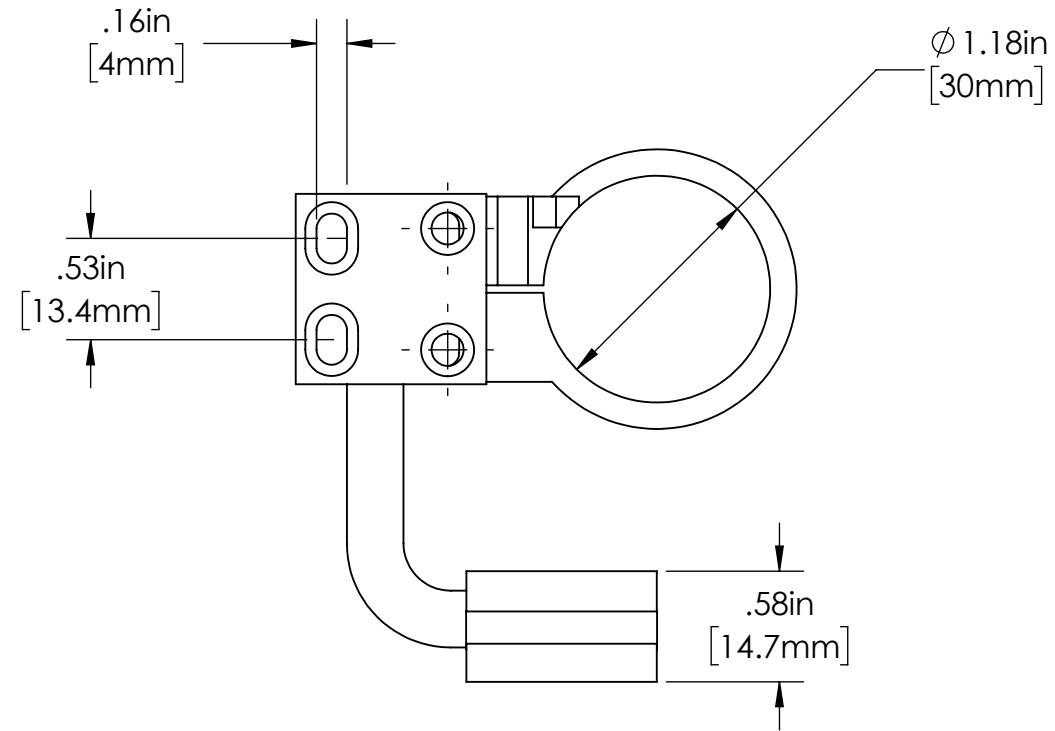
USED ON  
Per customer

|                  |   |                 |
|------------------|---|-----------------|
| SIZE<br><b>B</b> | DRAWING NUMBER<br><b>MB-AFSL-105-01</b> | REV<br><b>E</b> |
| SCALE 1:4        |   | SHEET 1 OF 2    |

Approval Signature

/ /  
Date

# OPTIONAL BRACKET



| <p>Metaphase Technologies, Inc. 211 Sinclair Road, Suite 100,<br/>Bristol, PA. 19007 215-639-8699 Fax 215-639-0977</p>   |              |  |           |         |           |   |    |     |      |        |              |              |       |   |  |
|--|--------------|--|-----------|---------|-----------|---|----|-----|------|--------|--------------|--------------|-------|---|--|
| <p>TOLERANCE/FINISH UNLESS OTHERWISE SPECIFIED</p> <table border="1"> <thead> <tr> <th>INCHES</th> <th>[MM]</th> <th>125√RMS</th> <th>[RA3.2um]</th> </tr> </thead> <tbody> <tr> <td>X</td> <td>.X</td> <td>.XX</td> <td>.XXX</td> </tr> <tr> <td>[±.76]</td> <td>±.030 [±.25]</td> <td>±.010 [±.13]</td> <td>±.005</td> </tr> </tbody> </table> <p>ANGLES ±1°</p> |              | INCHES   | [MM]      | 125√RMS | [RA3.2um] | X | .X | .XX | .XXX | [±.76] | ±.030 [±.25] | ±.010 [±.13] | ±.005 | <p>THIS DOCUMENT IS THE PROPERTY OF METAPHASE TECHNOLOGIES, INC. WHOM MAY LOAN IT, SUBJECT TO RETURN UPON DEMAND. IT INCLUDES CONFIDENTIAL &amp; PROPRIETARY INFORMATION WHICH MAY NOT BE DISCLOSED TO ANY THIRD PARTY, AND/ OR USED FOR ANY PURPOSE CONTRARY TO IT'S INTENDED USE, WITHOUT THE EXPRESSED PRIOR WRITTEN CONSENT OF METAPHASE TECHNOLOGIES, INC.</p> |  |
| INCHES   | [MM]         | 125√RMS  | [RA3.2um] |         |           |   |    |     |      |        |              |              |       |   |  |
| X  | .X           | .XX  | .XXX      |         |           |   |    |     |      |        |              |              |       |   |  |
| [±.76]   | ±.030 [±.25] | ±.010 [±.13]   | ±.005     |         |           |   |    |     |      |        |              |              |       |   |  |
| <p>FLAT PATTERNS USE 0.5 K FACTOR FOR DESIGN REFERENCE ONLY. ACTUAL VALUE MAY VARY, USE TEST PART AS REQ'D TO VERIFY ACCURACY</p>  |              | <p>TITLE<br/><b>SPOTLIGHT 0.6" ADJ FOCUS</b></p> <p>USED ON<br/><b>Per customer</b></p> <p>SIZE <b>B</b> DRAWING NUMBER <b>MB-AFSL-105-01</b> REV <b>E</b></p> <p>SCALE 1:4 SHEET 2 OF 2</p> |           |         |           |   |    |     |      |        |              |              |       |   |  |