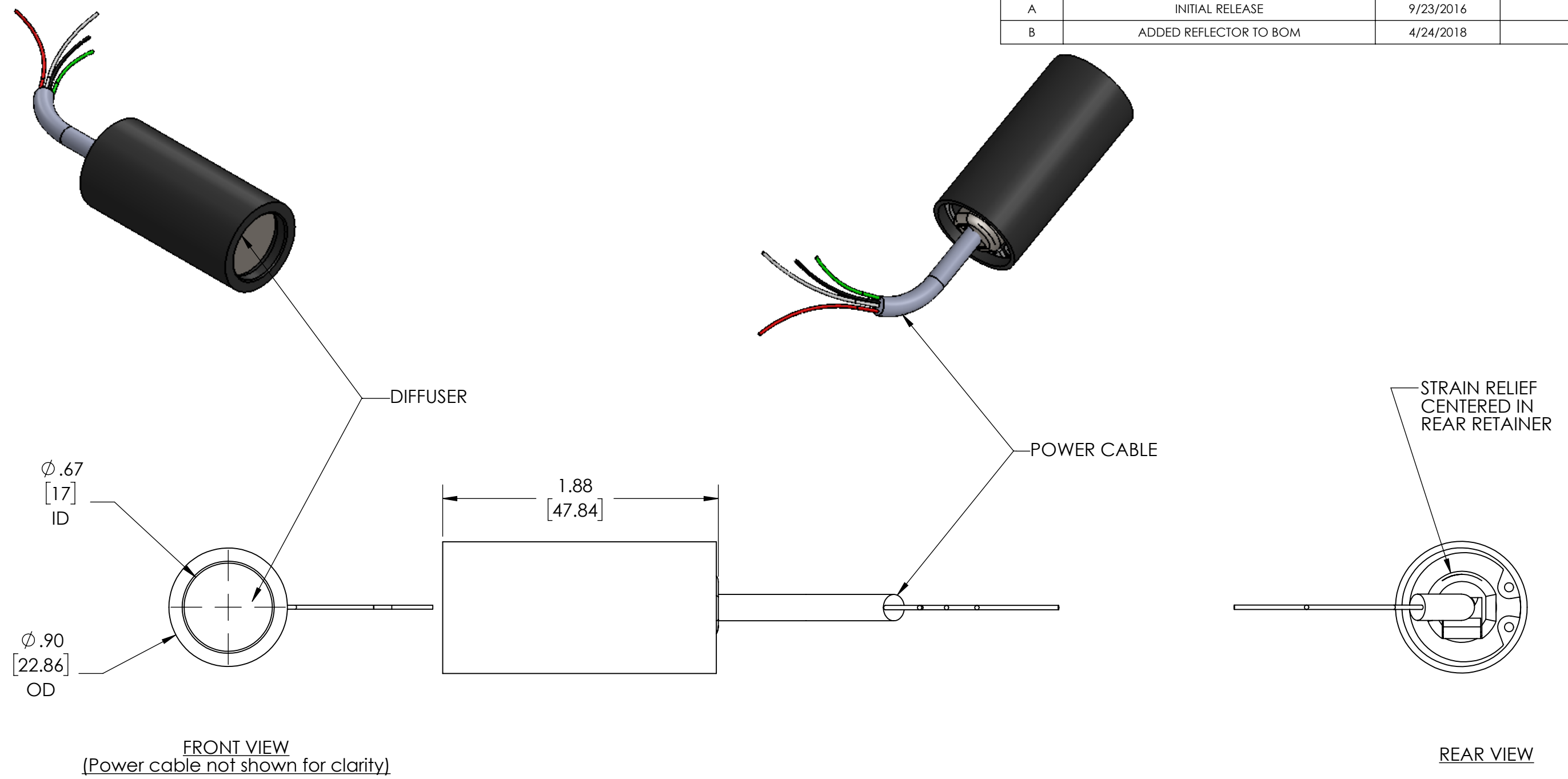


REVISIONS			
REV.	DESCRIPTION		APPROVED
A	INITIAL RELEASE	9/23/2016	
B	ADDED REFLECTOR TO BOM	4/24/2018	



FRONT VIEW
(Power cable not shown for clarity)

REAR VIEW

SEE SHEET 2 FOR EXPLODED VIEW AND BOM

Metaphase Technologies, Inc. 211 Sinclair Road, Suite 100, Bristol, PA. 19007 215-639-8699 Fax 215-639-0977			
QUANTITY: Per order	TOLERANCE/FINISH UNLESS OTHERWISE SPECIFIED		
MATERIAL: Per BOM	INCHES [MM]		
FINISH: Black Anodize	X	.X	.XX
TREATMENT: N/A	[±.76]	±.030 [±.25]	±.010 [±.13]
			.XXX ±.005
			125√RMS [RA3.2um]
			ANGLES ±1°
THIS DOCUMENT IS THE PROPERTY OF METAPHASE TECHNOLOGIES, INC. WHOM MAY LOAN IT, SUBJECT TO RETURN UPON DEMAND. IT INCLUDES CONFIDENTIAL & PROPRIETARY INFORMATION WHICH MAY NOT BE DISCLOSED TO ANY THIRD PARTY, AND/ OR USED FOR ANY PURPOSE CONTRARY TO IT'S INTENDED USE, WITHOUT THE EXPRESSED PRIOR WRITTEN CONSENT OF METAPHASE TECHNOLOGIES, INC.		TITLE: Assy.; Round Area Light- Ø.90 [22.8]	
USED ON: Per customer		SIZE: B	REV: B
DRAWING NUMBER: RAL050 Diffused-1		SCALE 1:1 SHEET 1 OF 1	

Approval Signature _____ Date ____/____/____